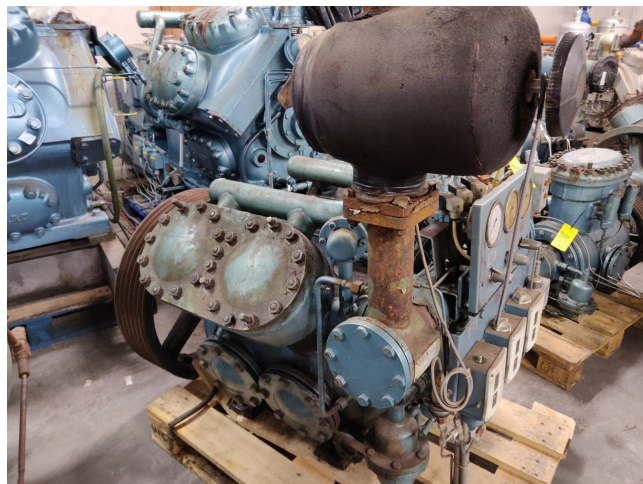


Grasso RC 411

Specifications

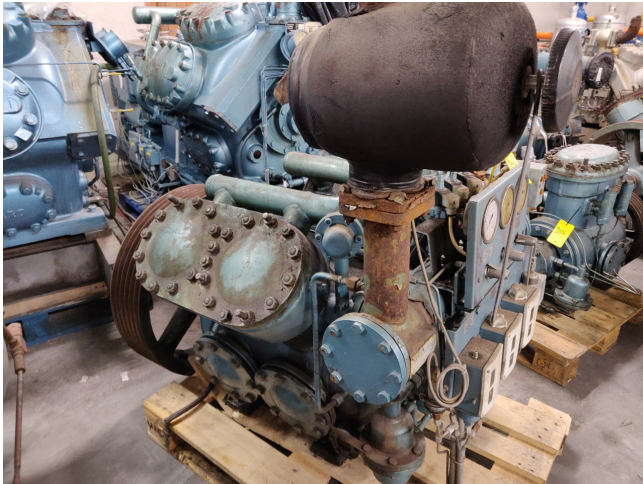
Marca	Grasso
Tipo	RC 411
Refrigerante	NH 3 (ammonia)
kW at +10°C/+40°C	660
kW at 0°C/+40°C	441.82
kW at -5°C/+40°C	354.71
kW at -10°C/+40°C	278.89
Presostatos	✓
Manometros de Presion	✓
Stock	1



Description

Used Grasso RC 411

Used Grasso RC 411 single stage compressor. Our capacity table is based NH3. For all the other specs (if available), see the picture of the manufacturer model plate or the attached pdf file. *Why choose for HOSBV? Were not only the largest used refrigeration specialist in Europe, but also, we deliver all equipment including an extensive test, warranty and industrial cleaning. *Optional we can also perform a new paint job and arrange the logistics.



NH₃

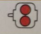


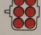

GRASSO
RC 411

Single-stage

n = 1000 rpm

↓ t ₁ (°C)	↓ Δt ₁ (K)	t ₁ (°C)	+20	+25	+30	+35	+40	+45
+10	0 5 10	Q _e (kcal/h)	—	645 500 629 800 614 800	624 900 609 500 595 300	603 700 588 900 575 100	581 900 567 500 554 200	559 400 545 600 532 800
—	—	P _e (kW)	—	68.8	80.0	91.8	104.1	116.6
+5	0 5 10	Q _e (kcal/h)	553 900 540 800 528 000	536 200 523 200 511 100	517 800 505 300 493 600	498 900 486 800 475 500	479 200 467 600 456 800	459 000 447 900 437 600
—	—	P _e (kW)	59.6	69.4	79.8	90.6	101.6	112.6
0	0 5 10	Q _e (kcal/h)	456 800 445 100 435 000	441 000 429 700 419 900	424 500 413 700 404 300	407 500 397 100 388 000	389 900 379 900 371 200	371 600 362 100 353 900
—	—	P _e (kW)	60.0	69.1	78.6	88.2	97.7	106.9
-5	0 5 10	Q _e (kcal/h)	372 600 363 800 355 600	358 400 350 000 342 100	343 600 335 600 328 000	328 300 320 600 313 300	312 300 305 000 298 100	295 800 288 800 —
—	—	P _e (kW)	59.6	67.8	76.1	84.3	92.1	99.2
-10	0 5 10	Q _e (kcal/h)	300 100 293 000 286 500	287 300 280 600 274 300	274 000 267 600 261 600	260 100 254 000 248 300	245 600 239 800 —	—
—	—	P _e (kW)	58.2	65.3	72.3	78.8	84.6	—
-15	0 5 10	Q _e (kcal/h)	238 000 232 400 227 200	226 400 221 300 216 200	214 300 209 300 204 700	201 700 197 000 —	—	—
—	—	P _e (kW)	55.8	61.6	67.0	71.5	—	—
-20	0 5 10	Q _e (kcal/h)	185 100 180 900 176 900	174 600 170 600 166 800	163 600 159 800 —	—	—	—
—	—	P _e (kW)	52.2	56.5	60.0	—	—	—
-25	0 5 10	Q _e (kcal/h)	140 600 137 400 134 400	130 900 128 000 —	—	—	—	—

Performance table

cylinder arrangement	single-stage						two-stage		
	type		NH ₃	R12	R22	R502	type		NH ₃
	RC 211	Q ₀ P _e	163 34	93 25	157 37	160 47			
	RC 311	Q ₀ P _e	245 50	140 36	236 55	241 70	RC 2111	Q ₀ P _e	45 23
	RC 411	Q ₀ P _e	326 65	186 48	314 73	321 93	RC 3111	Q ₀ P _e	63 31
	RC 611	Q ₀ P _e	490 97	279 70	471 108	481 138	RC 4211 RC 5111	Q ₀ P _e Q ₀ P _e	91 44 92 47
	RC 911	Q ₀ P _e	734 144	418 104	707 164	722	RC 6311	Q ₀ P _e	136